

Managing High-Throughput Screening Data

This module teaches scientists in pharmaceutical, biotechnology, and agrochemical companies how to register high-throughput screening sample and plate information using MDL SCREEN.

Course Objectives

The participant will be able to:

- ◆ Create assays, protocols, plate formats, and other experimental design parameters
- ◆ Enter information about the samples to be tested, including their source, location, volume, and associated chemical data
- ◆ Assign samples to masterplate records and queue daughterplate records for each assay
- ◆ Specify the plates assayed, print a worksheet, and load the resulting data
- ◆ Validate results by examining numeric data or displaying graphical profiles of individual well, control, and reference plate values
- ◆ Release validated data to the database and search the database by user-defined criteria
- ◆ Print reports that contain information about compounds, samples, plates, and runsets

Prerequisites

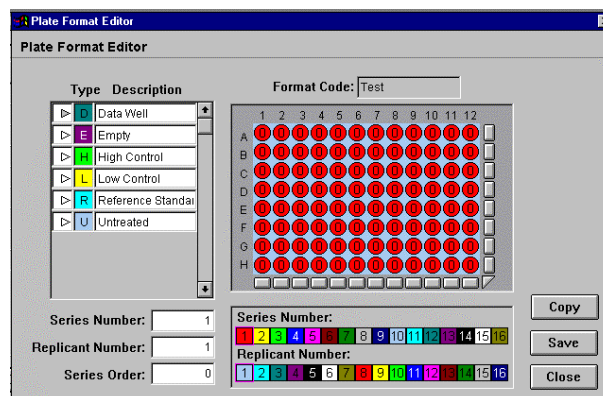
None

Course Length

1 day

Examples from the Class

Adding a new plate format



Creating a runset

