

# Managing Biological Information with Assay Explorer

This module introduces new users to Assay Explorer. Participants will follow an experimental scenario to create protocols that contain experimental variables. Participants will create experiments from those protocols, and enter and flag data. The data will then be sorted, filtered, and displayed in tabular or grid formats for analysis. Creation of plate layouts, reader file formats, and calculations are included for users with AE administrative responsibilities.

## Course Objectives

The participant will be able to:

- ◆ Create and edit protocols and protocol templates
- ◆ Create experiments from protocols and then load data from a text file
- ◆ Analyze and display data in tabular, scattergram, or grid format, generate curves, and generate calculated results
- ◆ Create and edit layouts and reader file formats
- ◆ Associate calculations and curve-fitting models with experimental variables

## Prerequisites

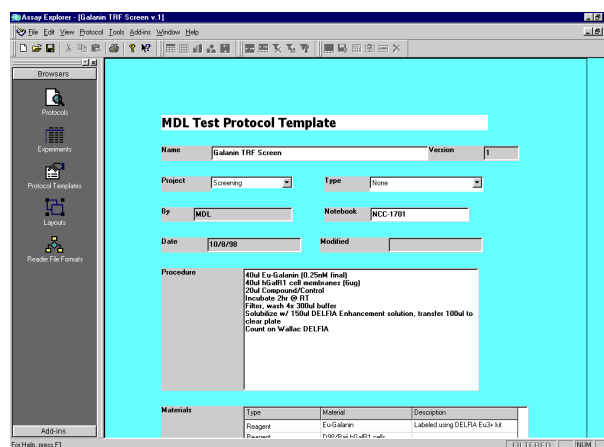
None

## Course Length

1/2 day

## Examples from the Class

### Creating a Protocol



### Displaying IC50 curve-fitting data

